

ACE PRE-CRUSHERS

Available in 2, 4, 5, and 6-Yard Sizes



The Leader in Quality, Design & Productivity

Ace Equipment Company Pre-Crushers are purpose-built based on customer feedback to remove the flaws that customers were facing when using competitors products. Our Pre-Crushers are placed before the compactor and act to reduce the initial volume of objects, like 55-gallon drums, wood pallets, skids, white goods, etc., that will eventually be compacted. Ace Equipment Company Pre-Crushers use PLC controllers exclusively to dramatically improve reliability and uptime. We also build our floors and sidewalls using a tongue-and groove construction process to reduce trash behind the pack head or beneath the floor. Most importantly, our front wall is made up of a 4" thick plate of solid steel for BUILT TUFF / BUILT RIGHT performance. Ace Equipment Company Pre-Crushers are available in 2, 4, 5, and 6-yard sizes and are manufactured using slot and tab construction for both repeatable quality and reliability. And of course, all Ace products are constructed in the USA with 100% US-sourced steel and components.

ACE EQUIPMENT COMPANY PRE-CRUSHER FEATURES

- 4" Thick Solid Steel Front Wall
- No Limit Switches
- Slot & Tab Construction
- Constructed with Hardox® Steel
- Tongue & Groove Floor & Sidewalls
- PLC Driven for Improved Productivity
- Four Sizes to Choose From
- In-House Build Power Unit
- American-Made Electric Motor
- American-Made Hydraulic Cylinder
- Available with Optional AR500 Liners
- Largest Charge Chamber in the Industry

ACE



EQUIPMENT COMPANY
BUILT TUFF. BUILT RIGHT.



Ace Equipment Pre-Crusher Overview

Perfect for:

- ✔ Automotive Manufacturers
- ✔ Equipment Manufacturers
- ✔ Large Distribution Centers
- ✔ Appliance Manufacturers
- ✔ Transfer Stations
- ✔ Product Destruction

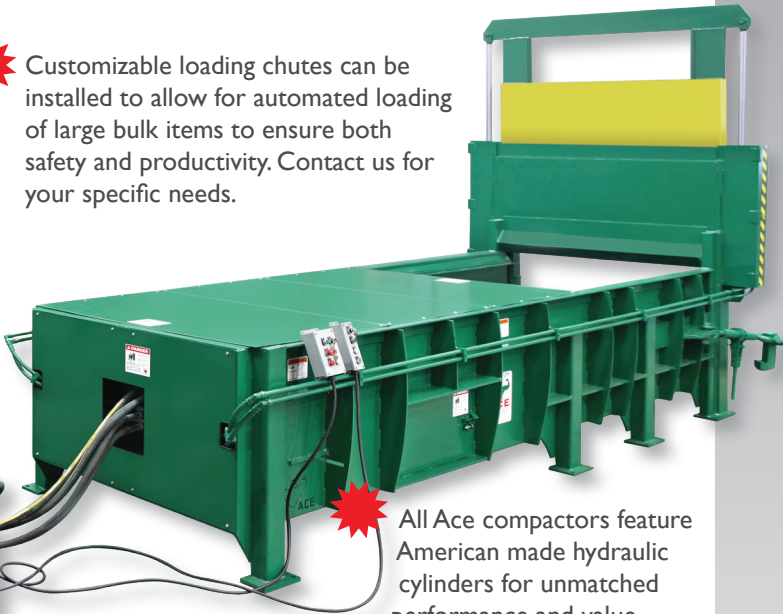
The Ace Equipment Company Pre-Crusher was designed from its inception to be the workhorse of the industry. From its robust 30 HP American-made motor to the AR500 liners to its programmable PLC controllers, Ace Pre-Crushers are the finest products available. Designed for consistent commercial use and found at transfer stations, large distribution centers and factories across the country, our Pre-Crushers represent the highest quality available on the market today.

✔ Designed to dramatically reduce the volume of materials prior to being compacted, thus increasing the payload of compacted materials and delivering exceptional ROI.

✔ Customizable loading chutes can be installed to allow for automated loading of large bulk items to ensure both safety and productivity. Contact us for your specific needs.



✔ Ace Equipment's power unit is 100% handcrafted at our Antigo, WI factory using only American-sourced motors and PLCs. No limit switches!



✔ All Ace compactors feature American made hydraulic cylinders for unmatched performance and value

Recent Installation Photos



✔ Our exclusive tongue & groove floor and sidewall construction prevents debris from getting underneath the floor or sides for smoother operation and longer life.

Our Pre-Crushers, with its standard 4" solid steel back wall have never failed since our first installation in 2000. With over 150 Ace Pre-Crushers currently operating in the US and Canada, we're confident our Pre-Crusher will exceed your expectations.

FEATURES & BENEFITS



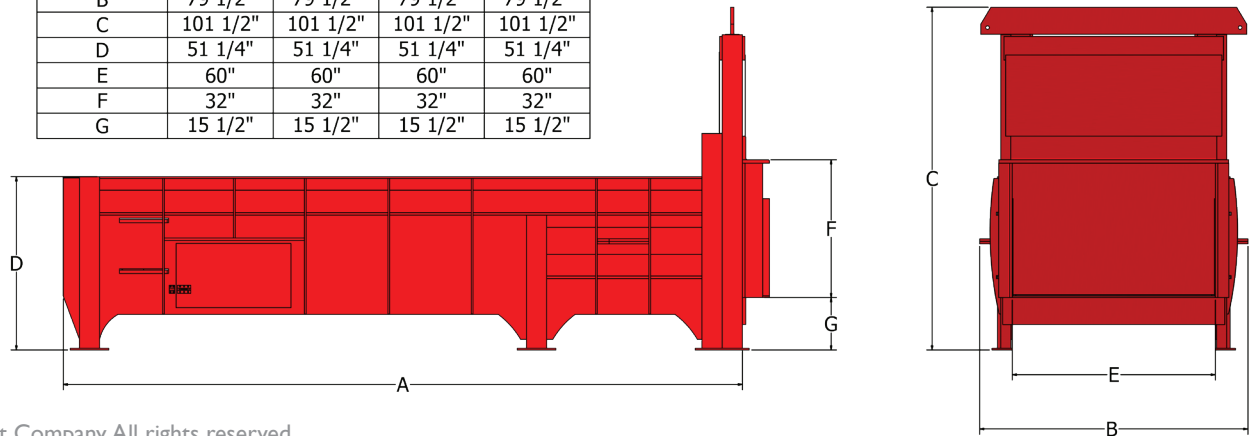
SPECS & DIMENSIONS

Pre-Crusher Specs & Dimensions

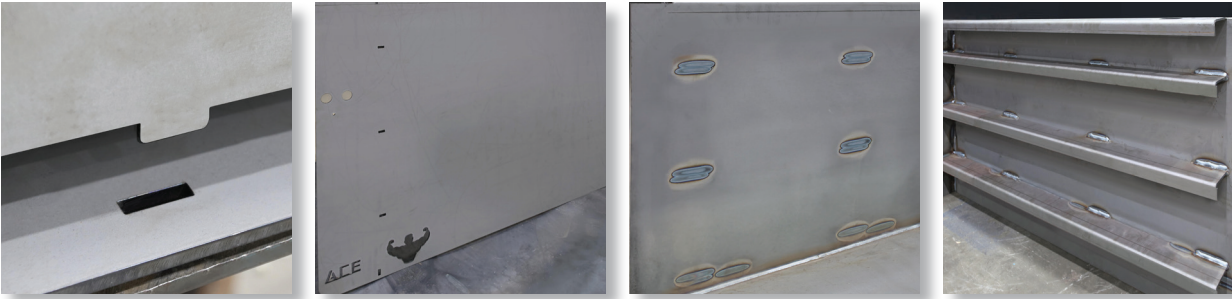
Pre-Crusher Specs	A2-PC	A4-PC	A5-PC	A6-PC
Clear Top	48" x 60"	60" x 60"	88" x 60"	102" x 60"
Capacity	2 cubic yard	4 cubic yard	5 cubic yard	6 cubic yard
Ram Face Size	27-1/4" x 56-7/8"	27-1/4" x 56-7/8"	27-1/4" x 56-7/8"	27-1/4" x 56-7/8"
Compactor Weight	17,000 lbs.	19,000 lbs.	20,000 lbs.	22,000 lbs.
Cycle Time	67 seconds	58 seconds	49 seconds	53 seconds
Total Normal Force	84,731 lbs.	84,731 lbs.	84,731 lbs.	84,731 lbs.
Normal Ram Face Pressure	51.9 psi	51.9 psi	51.9 psi	51.9 psi
Ram Penetration	15"	13"	11"	11"
Electric Motor	15 hp	20 hp	30 hp	30 hp
Electric Control Voltage	120 vac	120 vac	120 vac	120 vac
Standard Controls	Auto Start with Manual Controls			
Hydraulic Pump Capacity	16 gpm	22 gpm	33 gpm	33 gpm
Normal Pressure	2200 psi	2200 psi	2200 psi	2200 psi
Hydraulic Cylinders	1	1	1	1
Bore	7	7	7	7
Rod	5	5	5	5
Stroke	72"	86"	107"	116"
Face Plate	3/4"	3/4"	3/4"	3/4"
Platen Sides	1/2"	1/2"	1/2"	1/2"
Platen Bottom	1/2"	1/2"	1/2"	1/2"
Platen Top	1/2"	1/2"	1/2"	1/2"
Compactor Sidewalls	1/2"	1/2"	1/2"	1/2"
Compactor Floor	1/2"	1/2"	1/2"	1/2"

Optional AR500 Liners Available - Extra Heavy-Duty Configuration with 2 Main Cylinders Available

DIMENSION	A2-PC	A4-PC	A5-PC	A6-PC
A	160"	201"	245"	262"
B	79 1/2"	79 1/2"	79 1/2"	79 1/2"
C	101 1/2"	101 1/2"	101 1/2"	101 1/2"
D	51 1/4"	51 1/4"	51 1/4"	51 1/4"
E	60"	60"	60"	60"
F	32"	32"	32"	32"
G	15 1/2"	15 1/2"	15 1/2"	15 1/2"



Why We Stand Out. Why It Matters.



OLD WORLD CRAFTSMANSHIP COMBINED WITH NEXT-GENERATION TECHNOLOGY

Ace Equipment Company, it starts with our 'Slot & Tab' assembly technique. Using the latest Mitsubishi computer-automated laser cutter, to achieve tolerances that no one else in the industry can offer. This allows us to deliver repeatable quality that ensures your Ace Equipment Company Pre-Crusher will continually exceed your expectations and deliver our customers with an ROI that no other manufacturer can match. Then we use a tongue & groove process to construct our floors to dramatically reduce the chance of debris getting behind the pack head or under the floor. No other compactor manufacturer builds their products like this, because it's more expensive and takes more time to manufacture. We don't operate that way - and we don't cut corners.



It's also reflected in our modern facility. One visit to our Antigo, Wisconsin factory and you'll understand. Like every piece of equipment we manufacture, our factory was purpose built to attract the finest artisans who work in a safe and inviting, well-lit facility enhanced with the latest technology to allow us to offer products constructed from 100% US-sourced steel, US-sourced hydraulic cylinders and hydraulic motors. No other compactor manufacturer can make that claim. Take a good look at any Ace Equipment Company product and you'll see that we've overbuilt it because we know you won't under use it. That is part of BUILT TUFF - BUILT RIGHT philosophy.



Ace Equipment Company • 810 Hudson Street • Antigo, WI 54409 • 715-627-2400
www.aceequipmentcompany.com • info@aceequipmentcompany.com

SLOT & TAB PRECISION

ACE
EQUIPMENT COMPANY
BUILT TUFF. BUILT RIGHT.