



A-12 Transfer Compactor

FEATURES AND BENEFITS

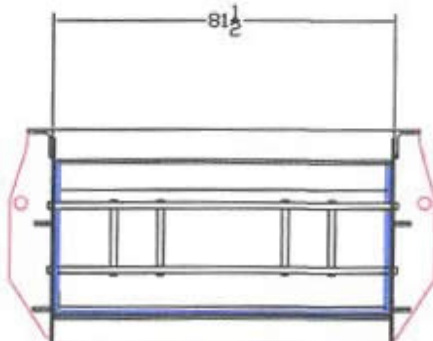
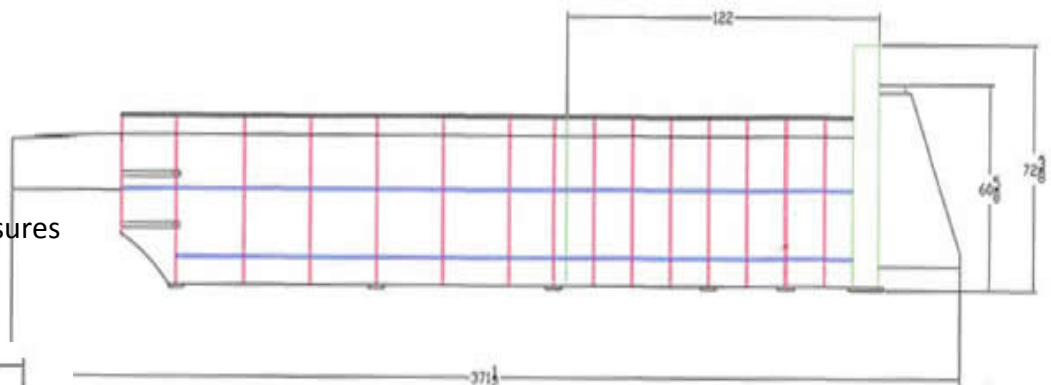
- ✓ Power unit mounted on top or in back.
- ✓ Key operated controls, authorized personnel only.
- ✓ Breaker bar is mounted above compactor creating less packing resistance and better compaction force.
- ✓ Tongue and groove construction, built to withstand all materials.
- ✓ The ram face is 1 ½" plate backed with burned interlocked steel.
- ✓ The floor is 1 1/8" plate backed with 1"x7" flat-bar.

SPECIFICATIONS

Clear top opening	81 in x 122 in
Charge Box	12 cu yard
Ram Faceplate	1 ½"
Compaction Force	165,000 lbs
Cylinder(s)	2- 7" cylinders
Ram penetration	30 in
Cycle Time	42 seconds
Power	3-Phase
Motor – 3 phase	60 HP

OPTIONAL EQUIPMENT

- ✓ Programmable cycles
- ✓ Cart dumper systems
- ✓ Oil heater
- ✓ Remote controls
- ✓ Custom Chutes & Enclosures
- ✓ Custom Stands
- ✓ Many others available



BUILT TUFF



ACE

EQUIPMENT COMPANY

Trash Compactors & Balers

ACE Equipment Company
 W9112 Cherry road
 Antigo, WI 54409
 Phone: 715-627-2400
 Fax: 715-627-2402

Website: www.aceequipmentcompany.com

Email: aceequipmentcompany@msn.com